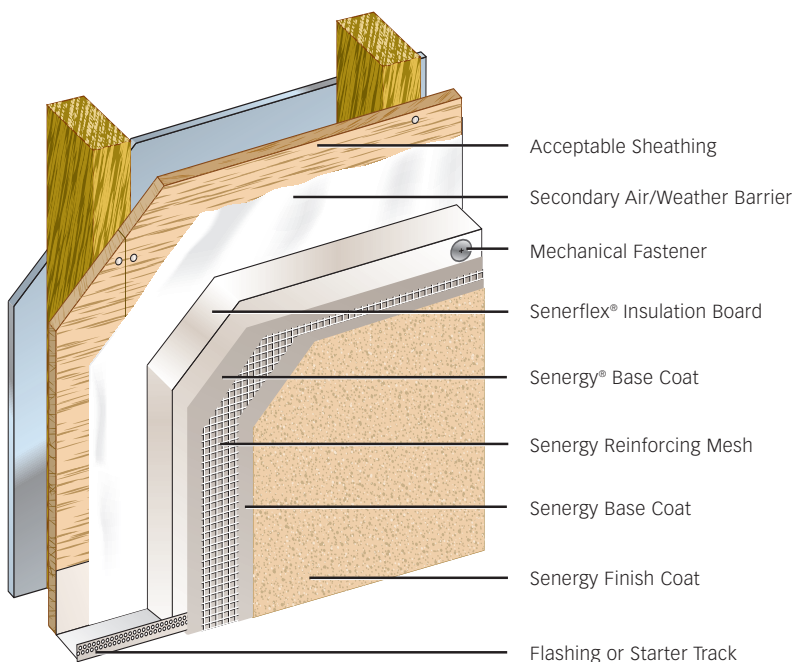




Senturion™ I Wall System

Water-managed Class PB EIFS incorporating an air/weather barrier

SYSTEM GUIDE
1022479



DESCRIPTION

Senturion I Wall System is a water-managed Class PB EIFS that includes a secondary air/weather barrier to protect the sheathing. The system offers design flexibility, aesthetic appeal and energy savings.

Integrated system components include a secondary air/weather barrier, EPS insulation board, mechanical attachments, reinforced base coat and 100% acrylic polymer finish. Apply the system over acceptable sheathings: Exposure I or exterior plywood sheathing (Grade C-D or better), Exposure I OSB, PermaBase brand cement-board (or other ASTM C1325 Type A Exterior approved cement boards), Fiberock Aqua-Tough Sheathing, Dens-Glass Gold sheathing (ASTM C1177), or gypsum sheathing (ASTM C79/C1396).

Senturion Wall Systems have passed rigorous tests including Full-Scale Fire, Wind-Driven Rain, and Moisture Drainage.

Finishes are available in a limitless color selection and offer performance enhancement options, including increased resistance to dirt pick-up and mildew.

Senturion I Wall System features easy installation, proven durability and low maintenance.

Uses

For exterior walls in new and retrofit light commercial and residential wood frame construction when a water-managed EIFS is desired or required, and where high wind-load capacity is not a design consideration.

Features	Benefits
Water-managed design	Drains incidental moisture to the exterior
Unlimited colors, textures and architectural details	Support design freedom, create details that would be impossible or cost prohibitive with other claddings
Exterior insulation	Reduces energy costs
100% Acrylic, reinforced base coats	Produce a weather-resistant barrier, provide crack resistance
100% Acrylic finish coats	Resist fading and abrasion, offer options for added dirt/mildew resistance

Senturion™ I Wall System

LIMITATIONS

1. Wind-load requirements may limit the use of this system.
2. Use only for above ground vertical walls.
3. Apply Senergy Senturion I Wall System materials in accordance with Senergy *Senturion I Wall System Specifications*.
4. Attach Starter Track level and per manufacturer's instructions and Senergy typical details. Ensure SELF ADHERING MESH TAPE/SENERSHIELD™, SHEATHING FABRIC/SENERSHIELD-R or other code approved secondary air/weather barrier overlaps the top of the flange of the starter track and is installed in accordance with air/weather manufacturer's specifications and complies with code requirements.
5. Install insulation boards horizontally, butting edges tightly, staggering vertical joints and corners in a running bond pattern, attaching using approved mechanical fasteners in accordance with current *Senturion Wall System Methods of Attachment* technical bulletin and to meet local design criteria. Fill gaps between insulation boards with slivers of insulation board.
6. Embed Senergy Reinforcing Mesh in wet Senergy Base Coat so that no Reinforcing Mesh color is visible. Double layers of mesh must be applied at all inside and outside corners. Window corners also require secondary reinforcement as per details. Apply multiple layers of Reinforcing Mesh and Base Coat where required for added impact resistance.
7. Apply Senergy ASAP/COLOR COAT into sealant joints after reinforced Base Coat has dried.
8. [Apply Senergy TINTED PRIMER to dry reinforced Base Coat.]
9. Apply Senergy Finish Coat to match the specified Finish type, texture and color when Primer and/or reinforced Base Coat are dry.

SYSTEM SPECIFICATIONS

To perform in the expected manner, the System must be applied according to Senergy specifications, using only the listed and approved materials and components.

COMPONENTS

Senturion I Wall System is comprised of SELF ADHERING MESH TAPE/SENERSHIELD™, SHEATHING FABRIC/SENERSHIELD-R or other code approved secondary air/weather barrier; optional SENERWRAP or SENERFLASH™; Senergy Base Coat; approved mechanical fasteners; a channeled expanded polystyrene insulation board conforming to Senergy Specifications; Senergy reinforcing mesh and a textured Senergy Finish. Optional TINTED PRIMER can enhance appearance and performance.

The system is applied over the following acceptable substrates: Exposure I or exterior plywood sheathing (Grade C-D or better), Exposure I OSB, PermaBase brand cement-board (or other ASTM C1325 Type A Exterior approved cement boards), poured concrete/unit masonry, Fiberock Aqua-Tough Sheathing, Dens-Glass Gold sheathing (ASTM C1177), or gypsum sheathing (ASTM C79/C1396).

EPS special shapes:

Used to enhance design aesthetics such as moldings, cornices, quoins, ogees, etc., these can be integrated into the system. They must be reinforced with Senergy Base Coat and Reinforcing Mesh prior to application of the TINTED PRIMER and Finish.

Design Considerations

1. Maximum allowable deflection L/240, based on stud properties only.
2. The design wind-load shall not exceed the system's allowable wind-load as stated in applicable code reports.
3. Details shall conform with Senergy's recommendations and shall be consistent with the project requirements.
4. Expansion joints are required in the system where they exist in the substrate, where the system adjoins dissimilar construction at changes in substrates, and at floor lines in multilevel wood frame construction.
5. System shall terminate at expansion joints.
6. Sealant joints shall be detailed and installed per sealant manufacturer's recommendations.
7. A minimum 6:12 slope is required on all horizontal surfaces greater than 1".
8. Backer rod, sealant and flashing are required at door and window openings.
9. Use high impact mesh for ground floor applications in high traffic areas.
10. Consult the framing and sheathing manufacturer for design and application considerations.

TECHNICAL INFORMATION

Consult the Degussa Wall Systems Technical Services Department for specific recommendations concerning all other applications. Consult the Senergy website, www.senergy.cc, for additional information about products and systems and for updated literature.

PRODUCT DATA—SIZES & PACKAGING

SENERSHIELD™, trowel-applied liquid air/weather barrier, is packaged in 27.2-kg, 19-liter (60-pound, 5-gallon) pails. Approximate coverage rate is 16.7–17.7 m² (180–190 ft²) per pail at proper thickness.

SENERSHIELD-R, roller or brush-applied liquid air/weather barrier, is packaged in 27.2-kg, 19-liter (60-pound, 5-gallon) pails. Approximate coverage rate per pail at 10 mils (wet) thickness varies depending upon substrate: Dens-Glass Gold [27.9–30.6 m² (300–330 ft²) (1 coat)], cement-board [27.9–37.2 m² (300–400 ft²) (1 coat)], exterior gypsum [46.1–53.3 m² (500–600 ft²) (1 coat)], OSB [23–32.2 m² (250–350 ft²) (2 coats)], plywood [23–32.2 m² (250–350 ft²) (2 coats)].

4" SHEATHING FABRIC for use with SENERSHIELD-R is packaged in 10.2 cm x 54.8 m (4" x 180') rolls.

9" SHEATHING FABRIC for use with SENERSHIELD-R is packaged in 22.9 cm x 54.8 m (9" x 180') rolls.

SELF ADHERING MESH TAPE (4") for use with SENERSHIELD is packaged in 10.2 cm x 45.7 m (4" x 150') rolls.

SELF ADHERING MESH TAPE (9") for use with SENERSHIELD is packaged in 22.9 cm x 45.7 m (9" x 150') rolls.

SENERWRAP 4 is available in 10.2 cm x 30.5 m (4" x 100') rolls, and SENERWRAP 9 is available in 22.9 cm x 30.5 m (9" x 100') rolls.

SENERFLASH 4 is available in 10.2 cm x 30.5 m (4" x 100') rolls, and SENERFLASH 9 is available in 22.9 cm x 30.5 m (9" x 100') rolls.

FLASHING PRIMER is packaged in 19-liter (5-gallon) pails and 3.8 liter (1-gallon) bottles. Coverage varies depending upon substrate.

Expanded Polystyrene Insulation Board, 0.6 m x 1.22 m (2' x 4'), minimum density of 14.41 k/m³ (0.9 lb/ft³) and thickness minimum 25 mm (1") meeting Senergy Specifications or Polyisocyanurate Insulation Board, 1.22 m x 2.44 m, 1.22 m x 2.74 m (4' x 8', 4' x 9'), nominal density 32kg/m³ (2 lbs/ft³); 25.4, 38.1, or 50.8 mm (1", 1.5", or 2") thickness as indicated on drawings; meeting Senergy Specifications.

Approximate coverage rate for NC-II BASE to embed FLEXGUARD 4 is 13.9 m² (150 ft²) per 27.2-kg, 19-liter (60-pound, 5-gallon) pail.

Approximate coverage rate for ALPHA BASE COAT, STANDARD BASE COAT, and XTRA-STOP BASE COAT to embed FLEXGUARD 4 is 26 m² (280 ft²) per 27.2-kg, 19-liter (60-pound, 5-gallon) pail.

Approximate coverage rate for ALPHA GENIE BASE COAT to embed FLEXGUARD 4 is 29.7 m² (320 ft²) per 27.2-kg, 19-liter (60-pound, 5-gallon) pail.

Approximate coverage rate for ALPHA DRY BASE COAT to embed FLEXGUARD 4 is 11.1 m² (120 ft²) per 22.6-kg (50-pound) bag.

FLEXGUARD 4, standard-weight Reinforcing Mesh at approximately 4.5 oz/yd² is available in 96.5 cm x 45.7 m (38" x 150') rolls. For wall system areas not expected to receive abnormal traffic or abuse.

INTERMEDIATE 6, standard-weight Reinforcing Mesh at approximately 5.6 oz/yd² is available in 96.5 cm x 45.7 m (38" x 150') rolls. For wall system areas not expected to receive abnormal traffic or abuse.

INTERMEDIATE 12, intermediate-weight Reinforcing Mesh at approximately 11 oz/yd² is available in 96.5 cm x 22.8 m (38" x 75') rolls. For use either alone or with FLEXGUARD 4 or INTERMEDIATE 6 to provide added impact resistance at specific areas such as around doors and walkways.

STRONG 15, medium-heavy weight Reinforcing Mesh at approximately 15 oz/yd² is available in 96.5 cm x 22.8 m (38" x 75') rolls. For wall system areas expected to receive traffic and abuse.

HI-IMPACT 20, heavy-weight Reinforcing Mesh at approximately 20 oz/yd² is available in 99.0 cm x 22.8 m (39" x 75') rolls. For wall system areas expected to receive a high degree of traffic and abuse.

CORNER MESH, intermediate-weight mesh at approximately 9.1 oz/yd² for use at exterior corners, is available in 22.9 cm x 45.7 m (9" x 150') rolls.

Approximate coverage rate for Senergy TINTED PRIMER is 69.6–116.1 m² (750–1,250 ft²) per 24.9-kg, 19-liter (55-pound, 5-gallon) pail.

SENERFLEX® and SILCOAT® Finishes are packaged in 31.7-kg, 19-liter (70-pound, 5-gallon) pails. Approximate coverages per pail for various textures are: CLASSIC [13 m² (140 ft²)], BELGIAN LACE [14.8 m² (160 ft²)], FINE [14.8 m² (160 ft²)], SAHARA [11.1 m² (120 ft²)], COARSE [8.3 m² (90 ft²)], TEXTURE (coverage varies depending upon application).

Specialty Finishes are packed in 31.7-kg, 19-liter (70-pound, 5-gallon) pails. Approximate coverages per pail for various textures are: AURORA TC-100 [6.5–9.2 m² (70–100 ft²)], AURORA STONE [6.5 m² (70 ft²)], BOREALIS [6.5–9.2 m² (70–100 ft²)], ALUMINA [8.4–9.2 m² (90–100 ft²)].

STORAGE

Store material in a cool, dry place. Avoid direct sunlight. Maintain temperature above 4°C (40°F) (10°C/50°F for AURORA TC-100, AURORA STONE, ALUMINA and BOREALIS Finishes).

HEALTH AND SAFETY

Follow good safety and industrial hygiene practices during handling and installing products and systems. Take necessary precautions and wear the appropriate personal protective equipment as needed. Read material safety data sheets and related literature on products before specification and/or installation.

Senturion™ I Wall System

SUBMITTAL APPROVALS

Job Name: _____

Contractor: _____ Date: _____

Distributor: _____

RESIDENTIAL POLICY

On one and two-family residential framed construction, Degussa Wall Systems, Inc. requires that the wall system selected be one that includes provisions for moisture drainage. The choices include Senturion® line of water managed EIFS, commercial Senerflex® Wall Systems integrating moisture management features, Senergy Stucco Wall System, and Senergy Cement-Board Stucco™ Systems. Senergy Exterior Surfacing Systems for insulating concrete forms are also acceptable. There are no exceptions to this policy. Under no circumstances will Degussa Wall Systems, Inc. warrant the use of any other system on this type of construction without expressed written authorization from Degussa Wall Systems, Inc. [Residential construction using EIFS on masonry (CMU) or poured concrete does not require the additional water management provisions described above.]

See the Senergy *Residential Policy Bulletin* for a more detailed discussion of this topic. Consult Degussa Wall Systems Technical Services Department for specific recommendations concerning all other applications. Consult the Senergy web-site, www.senergy.cc for additional information about products and systems and for updated literature.

DISCLAIMER

This information and all further technical advice are based on Degussa's present knowledge and experience. However, Degussa assumes no liability for providing such information and advice including the extent to which such information and advice may relate to existing third party intellectual property rights, especially patent rights. In particular, Degussa disclaims all CONDITIONS AND WARRANTIES, WHETHER EXPRESS OR IMPLIED, INCLUDING THE IMPLIED WARRANTIES OF FITNESS FOR A PARTICULAR PURPOSE OR MERCHANTABILITY. DEGUSSA SHALL NOT BE RESPONSIBLE FOR CONSEQUENTIAL, INDIRECT OR INCIDENTAL DAMAGES (INCLUDING LOSS OF PROFITS) OF ANY KIND. Degussa reserves the right to make any changes according to technological progress or further developments. It is the customer's responsibility and obligation to carefully inspect and test any incoming goods. Performance of the product(s) described herein should be verified by testing and carried out only by qualified experts. It is the sole responsibility of the customer to carry out and arrange for any such testing. Reference to trade names used by other companies is neither a recommendation, nor an endorsement of any product and does not imply that similar products could not be used.

Degussa Wall Systems, Inc.

3550 St. Johns Bluff Road South
Jacksonville, FL 32224-2614
Phone 800 • 221 • 9255
Fax 904 • 996 • 6300
www.senergy.cc